

VILLAGGIO ISLES - PHASE I

TERRANOVA PUD, A PLANNED UNIT DEVELOPMENT
 BEING A PORTION OF THE SOUTHWEST 1/4 OF SECTION 16, TOWNSHIP 46 SOUTH, RANGE 42 EAST, TOGETHER WITH
 A REPLAT OF A PORTION OF THE PLAT OF SUBDIVISION OF S.E. 1/4 AND W. 1/2 OF SECTION 16 TOWNSHIP 46S RANGE 42E,
 AS RECORDED PLAT BOOK 1, PAGE 158 OF THE PUBLIC RECORDS OF PALM BEACH COUNTY, FLORIDA

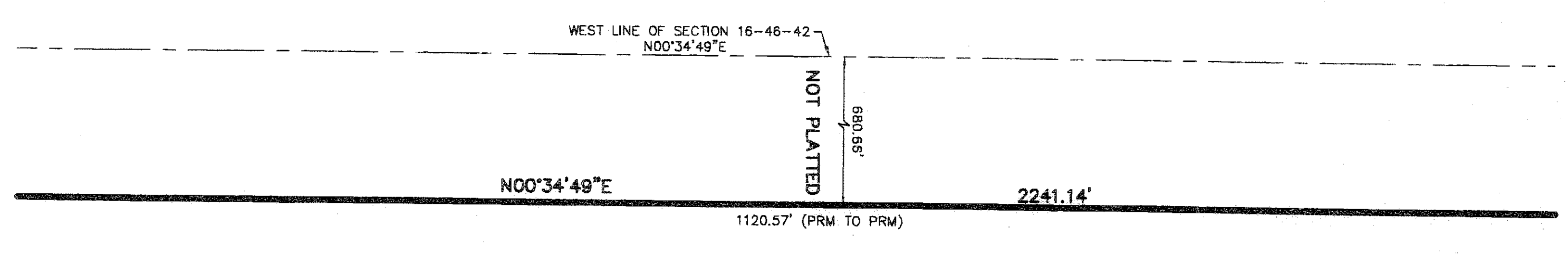
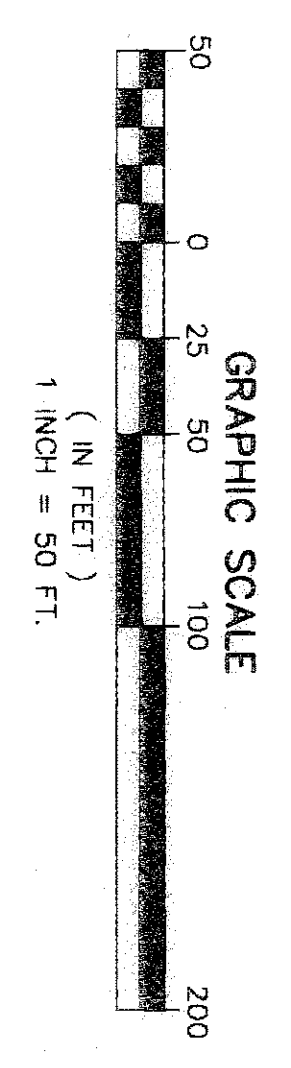
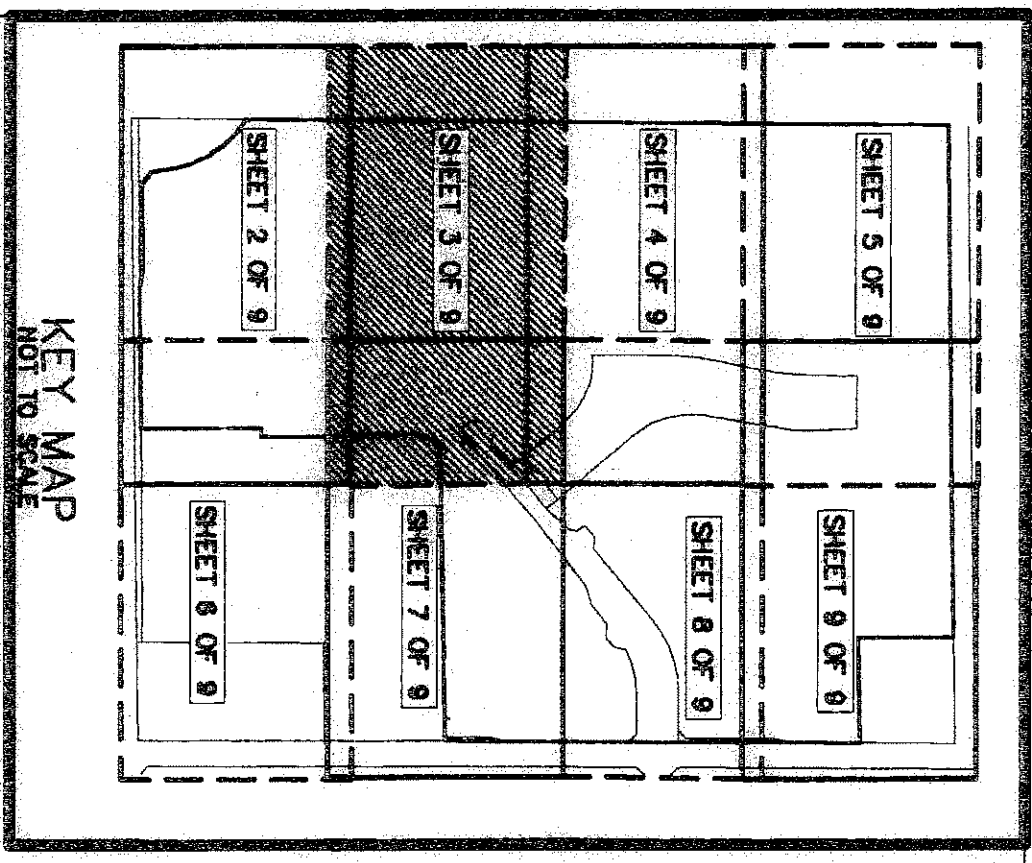
THIS INSTRUMENT PREPARED BY
 DAVID P. LINDLEY
 OF
CAULFIELD and WHEELER, INC.
 SURVEYORS - ENGINEERS - PLANNERS
 7301 - A WEST PALMETTO PARK ROAD, SUITE 100A
 BOCA RATON, FLORIDA 33433 - (561) 392-1991
 FEBRUARY - 2008

NOTES
 COORDINATES, BEARINGS AND DISTANCES
 COORDINATES SHOWN ARE GRID
 DATUM = NAD 83 1990 ADJUSTMENT
 ZONE = FLORIDA EAST FEET
 LINEAR UNIT SYSTEM IS METERS
 COORDINATE SYSTEM IS NAD 83
 ALL DISTANCES ARE GROUND
 SCALE FACTOR = 1.0000285
 GROUND DISTANCE X SCALE FACTOR = GRID DISTANCE
 NAD 83 1990 ADJUSTMENT, FLORIDA EAST ZONE.

P.R.M.	NORTHING	EASTING
1	771561.50	928305.08
2	771572.96	928345.86
3	771599.19	928000.96
4	771607.75	927983.40
5	771607.75	927874.75
6	771607.75	927874.75
7	771607.75	927874.75
8	771607.75	927874.75
9	771607.75	927874.75
10	771607.75	927874.75
11	771607.75	927874.75
12	771607.75	927874.75
13	771607.75	927874.75
14	771607.75	927874.75
15	771607.75	927874.75
16	771607.75	927874.75
17	771607.75	927874.75
18	771607.75	927874.75
19	771607.75	927874.75
20	771607.75	927874.75

STATE OF FLORIDA
 COUNTY OF PALM BEACH
 THIS PLAT WAS FILED FOR
 RECORD AT
 THIS DAY OF
 A.D. 2008 AND DULY RECORDED
 IN PLAT BOOK
 PAGES AND ON
 SHARON R. BOCK
 CLERK AND COMPTROLLER
 BY:
 DEPUTY CLERK

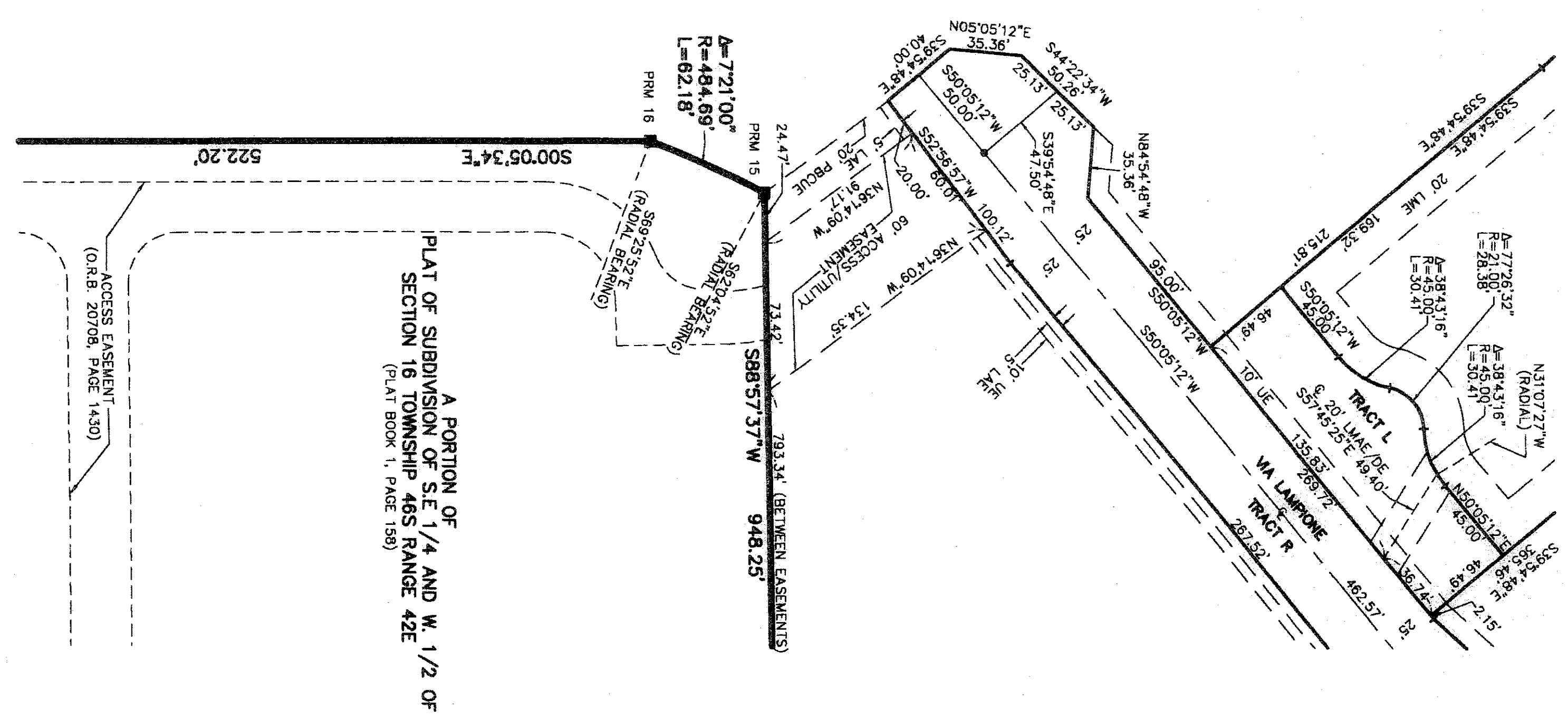
SHEET 3 OF 9



MATCH LINE SHEET 4 OF 9

PARCEL A

MATCH LINE SHEET 7 OF 9



MATCH LINE SHEET 2 OF 9